

# Writing Major Key Signatures

Dr. David Shaw, MUS 109 Music Theory I

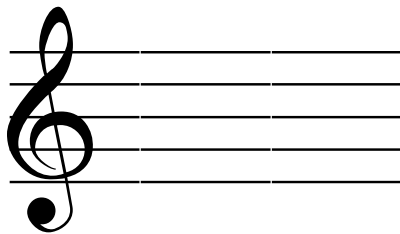
1) Decide if  $\sharp$ 's or  $\flat$ 's:

All  $\flat$  key signatures have a  $\flat$  in their name: B $\flat$ , E $\flat$ , A $\flat$ , etc.

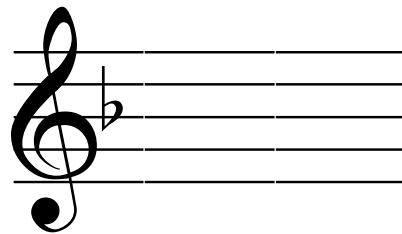
---

2) Exceptions:

C Major:



F Major:



3) If  $\sharp$ 's:

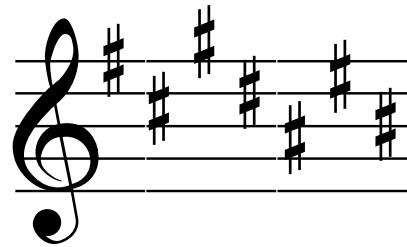
KEY NAME

is m2 ABOVE

Last  $\sharp$

First  $\longrightarrow$  Last

F $\sharp$  C $\sharp$  G $\sharp$  D $\sharp$  A $\sharp$  E $\sharp$  B $\sharp$



4) If  $\flat$ 's:

KEY NAME

is

2nd to last  $\flat$

First  $\longrightarrow$  Last

B $\flat$  E $\flat$  A $\flat$  D $\flat$  G $\flat$  C $\flat$  F $\flat$

